

# *Commercial Heat Pump Water Heating Systems*



DESIGNED ★ ENGINEERED ★ ASSEMBLED

**USA**



**Lochinvar®**

For more information visit [Lochinvar.com](http://Lochinvar.com)

# Air Source Heat Pump



- Up to 160°F max water temperature
- Heating capacity from 110,000 BTUH to 250,000 BTUH
- 133 to 340 gallons per hour recovery rates
- Environmentally friendly R134a refrigerant
- Double wall condenser for potable water heating
- Integrated potable water approved pump
- BACnet compatible logic controller optional

The Lochinvar AHP Heat Pump Series is a zero emissions, high-efficiency air-to-water heat pump water heater that can be configured to meet design specifications. With three models ranging in capacity from 110,000 BTUH to 250,000 BTUH, generating 133 to 340 gallons of hot water per hour, the Lochinvar AHP Heat Pump offers an environmentally friendly solution to your hot water needs.

Model	Heating Cap.* (BTUH)	Amps RLA		Length	Width Axial	Width Blower	Height
		230V	480V				
AHP090	110,725	39.3	20.8	70-1/4"	32-3/4"	29-3/4"	40-1/4"
AHP185	224,675	81.3	36.5	72-3/4"	45-3/8"	42-3/4"	43"
AHP250	272,450	95.4	49.1	84-5/8"	55-3/8"	54-3/8"	70"

\* 75F Dry Bulb / 60% humidity

\*Water heated from 50F to 150F

# Water Source Heat Pump



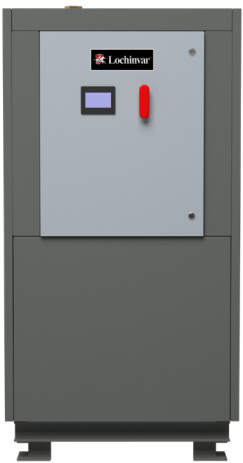
- Up to 160°F max water temperature
- Heating capacity from 146,000 BTUH to 250,000 BTUH
- 174 to 270 gallons per hour recovery rates
- Absorbs heat from water sources including process and ground water.
- Environmentally friendly R134a refrigerant
- Double wall condenser for potable water heating
- Integrated potable water approved pump
- BACnet compatible logic controller optional

The Lochinvar WHP Heat Pump Series is a zero emissions, high-efficiency water-to-water heat pump water heater that can be configured to meet design specifications. With two models ranging in capacity from 146,000 BTUH to 250,000 BTUH, generating from 174 to 270 gallons of hot water per hour, the Lochinvar WHP Heat Pump provides an environmentally friendly solution to your hot water needs.

Model	Heating Capacity * (BTUH)	Amps RLA		Length	Width	Height
		230V	480V			
WHP125	146,792	53.0	26.7	49"	31-1/4"	38-1/8"
WHP185	222,950	78.0	35.0	49"	31-1/4"	38-1/4"

\* 80F source water

# Modular Source Heat Pump



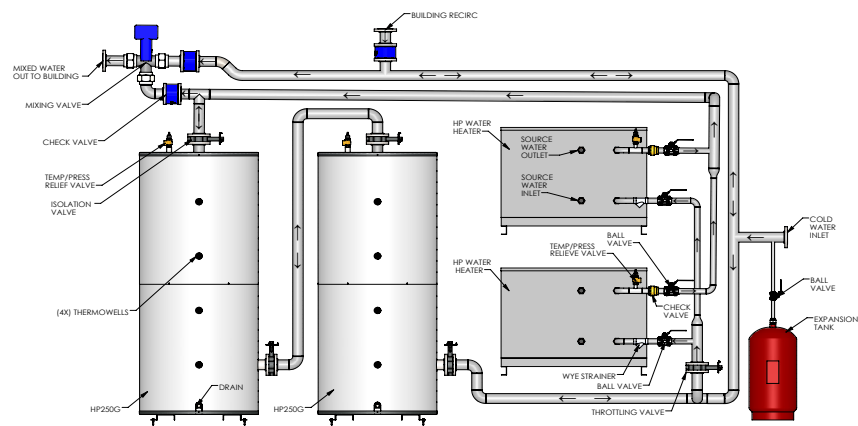
- Up to 160°F max water temperature
- Heating capacity from 270,000 BTUH to > 2,000,000 BTUH
- 323 to 2,584 gallons per hour recovery rates
- Absorbs heat from water sources including return chiller water, process and ground water.
- Environmentally friendly R134a refrigerant
- Double wall condenser for potable water heating
- BACnet compatible logic controller optional

The Lochinvar MHP Heat Pump Series is a zero emissions, high-efficiency modular water-to-water heat pump water heater. With eight models ranging in heating capacity from 270,000 BTUH to over 2,000,000 BTUH generating from 323 to 2,584 gallons of hot water per hour, the Lochinvar MHP Heat Pump offers large scale, environmentally friendly water heating solutions for even the largest projects.

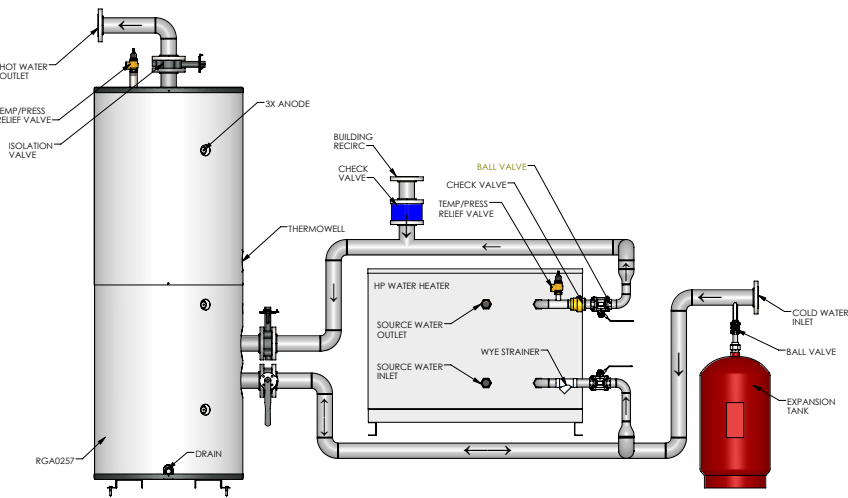
Model	Heating Capacity * (BTUH)	Amps RLA		Length	Width	Height
		230V	480V			
MHP0270	277,100	92.9	49.3	34-7/8"	36-1/4"	68-1/2"
MHP0540	554,200	185.8	98.6	64-1/4"	36-1/4"	68-1/2"
MHP0810	831,300	278.7	147.9	99-5/8"	36-1/4"	68-1/2"
MHP1080	1,108,400	371.6	197.2	132"	36-1/4"	68-1/2"
MHP1350	1,385,500	464.5	246.5	164-3/8"	36-1/4"	68-1/2"
MHP1620	1,662,600	557.4	295.8	Based on Configuration		
MHP1890	1,939,700	650.3	345.1	Based on Configuration		
MHP2160	2,216,800	743.2	394.4	Based on Configuration		

\* 80F source water

# Single-Pass



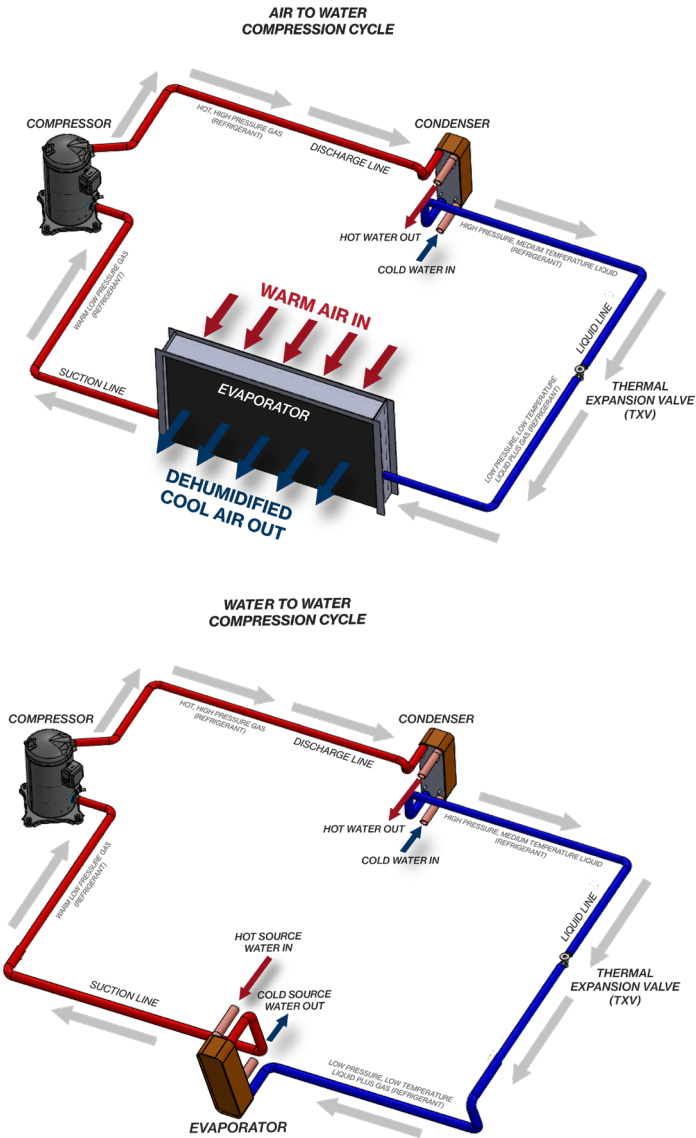
# Multi-Pass



Consult factory for option compatibility.

For complete product details please visit [Lochinvar.com](http://Lochinvar.com)

## How it works



It cost less to move heat than to create heat. Lochinvar commercial air and water source heat pumps are designed to be an energy efficient, zero emissions solution for your water heating needs.

The image above illustrates a basic refrigeration cycle that is used in our heat pump water heaters. Based on the unit selected, the system in your heat pump may be more elaborate, but the basic principles apply.